



PUTTERILLS

est. 1992



£1,200 PCM
Alexander Gate
Stevenage, SG1 5RG

PROPERTY SUMMARY

This spacious one-bedroom property is situated in the highly desirable Chells Manor area of Stevenage. The property has an entrance hall that leads to a generously sized lounge. The lounge benefits from an abundance of natural light, and a large built in storage cupboard.

The kitchen has been recently refurbished to a modern standard featuring ample cupboard storage to accommodate various culinary needs.

The property includes a large double bedroom. The contemporary bathroom is

designed with a modern suite and vanity cupboard and is equipped with an enclosed bath that includes a shower overhead, alongside a wash basin and W/C.

Externally, the property offers the advantage of two designated off-road parking spaces—one

positioned at the front of the property and another located along the side. Furthermore, there is gated access to a rear garden designed for low maintenance, featuring astro turf that provides an appealing green space. A garden shed is also available for additional storage of tools or outdoor equipment, enhancing the practicality of this outdoor area.

1



1



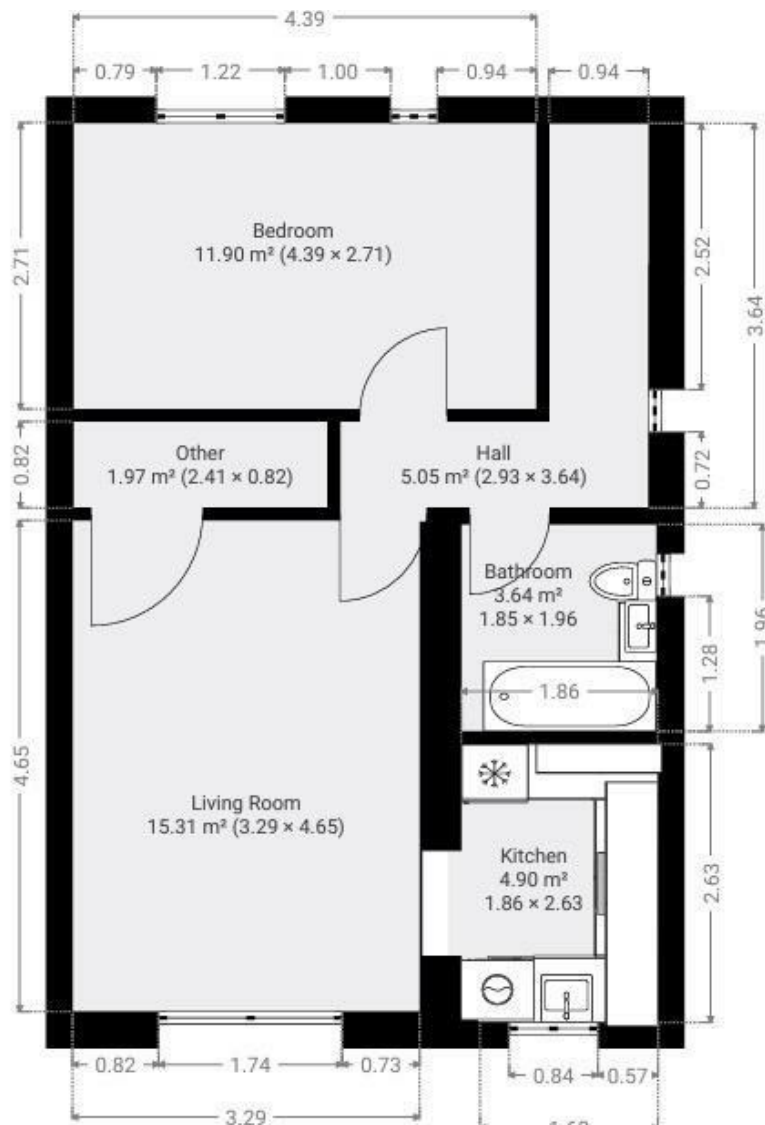
1











LOCAL AUTHORITY
NHDC

TENURE

COUNCIL TAX BAND
B

VIEWINGS
By prior appointment only

Energy Efficiency Rating		
	Current	Potential
Very energy efficient - lower running costs		
(92 plus) A		
(81-91) B		
(69-80) C		
(55-68) D		
(39-54) E		
(21-38) F		
(1-20) G		
Not energy efficient - higher running costs		
England & Wales		EU Directive 2002/91/EC

Agents Note: Whilst every care has been taken to prepare these particulars, they are for guidance purposes only. All measurements are approximate and are for general guidance purposes only and whilst every care has been taken to ensure their accuracy, they should not be relied upon and potential buyers/tenants are advised to recheck the measurements



OFFICE ADDRESS

Putterills Lettings
123 London Road
Knebworth
SG3 6EX

OFFICE DETAILS

01462 419333
lettings@putterills.co.uk
www.putterills.co.uk